

# 12" SQUARE WAVE ANTI-ENTRAPMENT SUCTION OUTLET COVER, VENTED RISER RING AND MUD FRAME



**VGB CERTIFIED  
SPECIFICATIONS**

**Floor Flow Rating**  
361 GPM at 1.3 fps

**Wall Flow Rating**  
361 GPM at 1.3 fps

**Sump Depth**  
3" minimum

**Open Area**  
90.8 in<sup>2</sup>

## FEATURES

All components meet or exceed ANSI/APSP 16-2011 and NSF/ANSI 50-2009a national standards and ASTM G154 UV testing exposure

Easily and safely retrofits to 12" square 3/4" deep frames

#316 stainless steel screws

Manufactured from superior UV-resistant engineered polymers

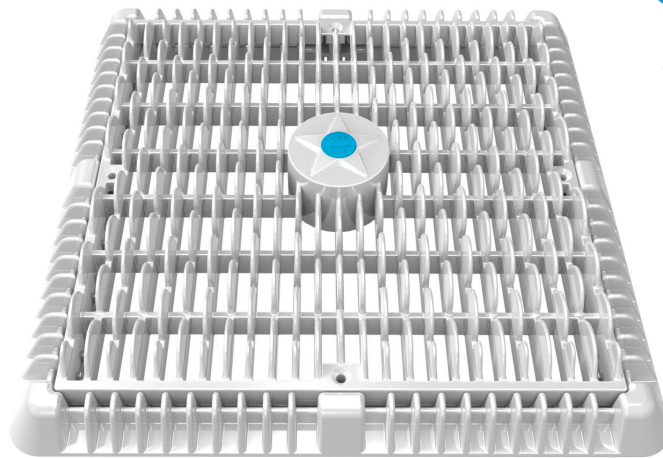
Trademarked VGB compliance button easily identifies VGB 2008 compliant cover from on deck and underwater

Online product support including downloadable CAD files, certificate of conformity, third-party certificate, installation instructions and more

Replace drain cover every five years from the date of installation

6 per case

U.S. patents D623727 and D663388



Part # WAV12WRxxx

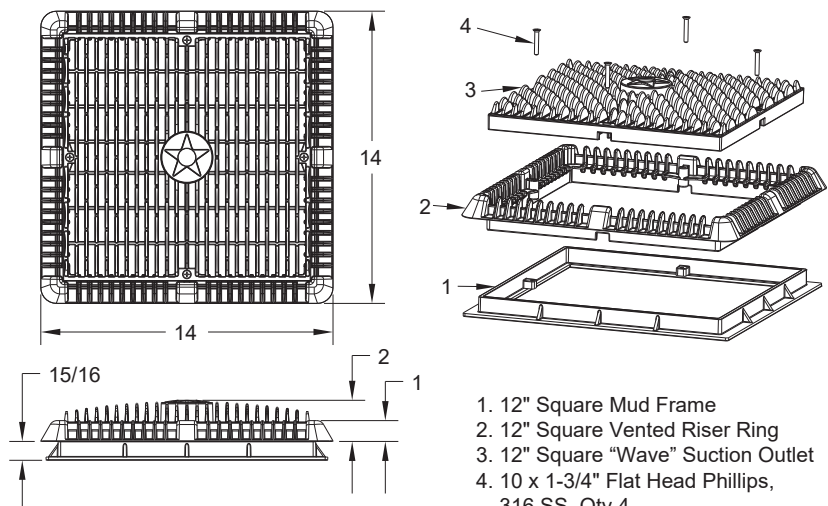
\*Fits: AquaStar (all standard 12" square), Pentair (#1 selling) with 3/4" deep existing frames and four screw hole pattern

## STANDARD COLORS

- ☐ WAV12WR101 – White
- ☐ WAV12WR102 – Black
- ☐ WAV12WR103 – Light Gray
- ☐ WAV12WR104 – Blue
- ☐ WAV12WR105 – Dark Gray
- ☐ WAV12WR108 – Tan

Replaces p/n P12xxx

**VGB 2008 Compliant**

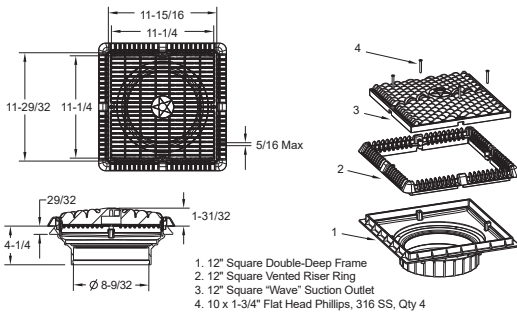
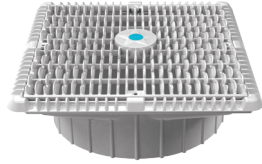


1. 12" Square Mud Frame
2. 12" Square Vented Riser Ring
3. 12" Square "Wave" Suction Outlet
4. 10 x 1-3/4" Flat Head Phillips, 316 SS, Qty 4

## ADDITIONAL PRODUCT CONFIGURATIONS FOR WAV12WRXXX

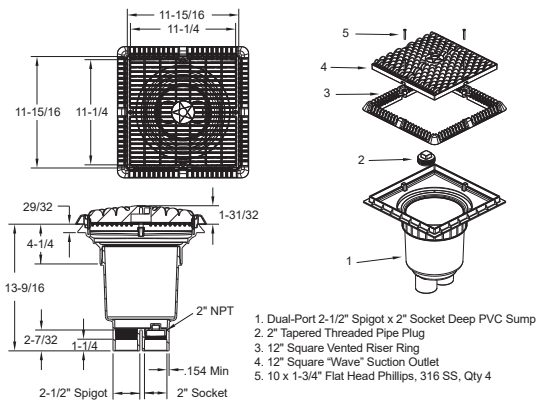
### Double-Deep Sump

Part #  
WAV12WRxxxA  
4 per case



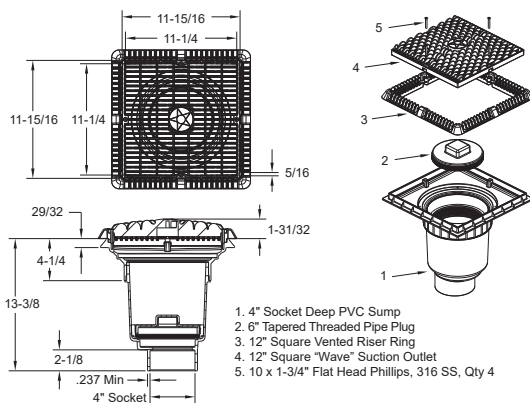
### Dual-Port 2 1/2" Spigot x 2" Socket Deep PVC Sump

Part #  
WAV12WRxxxB  
1 per case



### 4" Socket Deep PVC Sump

Part #  
WAV12WRxxxD  
1 per case



### 6" Socket Deep PVC Sump

Part #  
WAV12WRxxxF  
1 per case

